



PENETRON[®]
SPECIALTY PRODUCTS

FOR THE BEST IN FLOOR PREPARATION PRODUCTS

LEVELINE

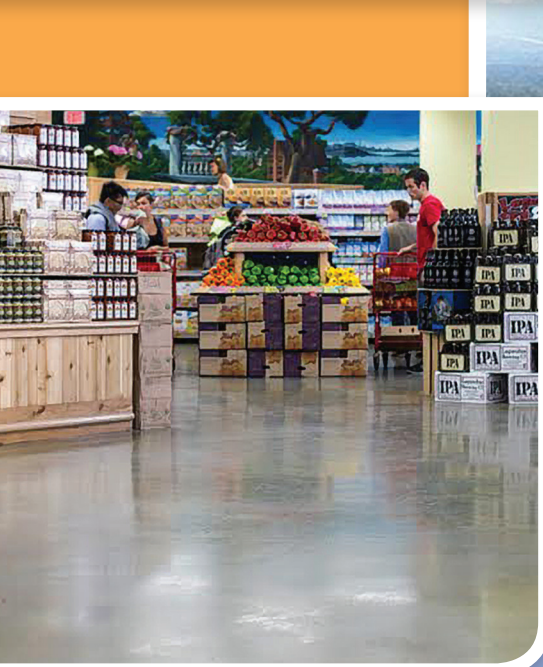
HIGH PERFORMANCE, LOW ALKALI, SELF-LEVELING UNDERLAYMENT



University Towers, Calgary, Canada



Each of the four 11-story towers has 132 units per tower—528 units in all. The complex includes a ground level retail area, the Foothills Hospital, the new Alberta Children's Hospital, University Research Park and SAIT Polytechnic. The project called for an absolutely smooth, flat and hard surface. LEVELINE 15 met all client specs for the final flooring, an engineered laminate ceramic tile.



↑ Trader Joe's, Stamford, Connecticut

Trader Joe's in Stamford, CT, part of a popular national supermarket chain, renovated 14,000 square feet (1,300 m²) of floor space with PRIMER STX 100 and LEVELINE 15 and a final VCT flooring cover.



↑ Stamford Hospital, Stamford, Connecticut

Highlighted by an 11-floor glass-clad medical tower, the fast-track schedule presented sizeable challenges for such a large project. Over 400,000 square feet (37,000 m²) of concrete floors were treated with LEVELINE 15. Nora flooring and Patcraft sheet vinyl were specified as the final flooring.

WORKING WITH LEVELINE

A high performance self-leveling underlayment

When challenged with an unacceptable floor surface and an accelerated installation schedule, the LEVELINE family of high performance self-leveling underlayments from PENETRON SPECIALTY PRODUCTS (PSP) provides an optimal solution.

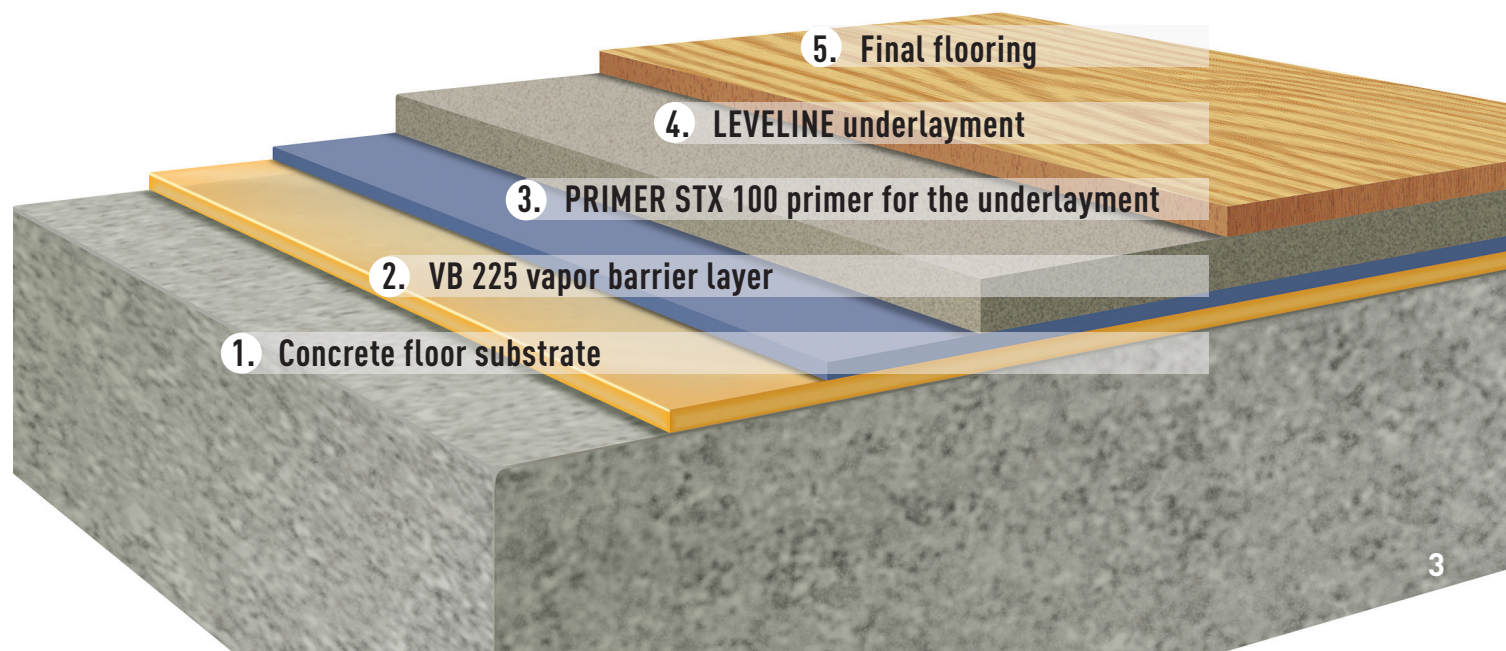
Whether for renovations or new construction, LEVELINE self-leveling underlayments can provide a level and flat surface prior to the installation of virtually any floor covering. They are suitable for use on all residential, commercial and institutional applications, and can eliminate installation problems by moisture, alkalinity, surface contamination and other deficiencies in the substrate.



LEVELINE advantages

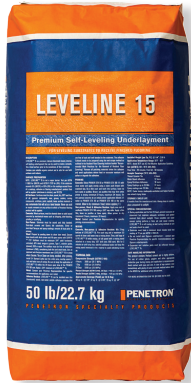
- Ideal for barrel mixing or pumping applications
- High early strength—fast return to service
- No dangerous emissions or irritating fumes
- Environmentally friendly
- Lower alkali binder system creates a PH barrier system from the underlying concrete
- May contribute to LEED eligibility
- Accepts most floor coverings, installed with water-based adhesive, in as little as 12 hours

How the PSP System works as a stand-alone solution or component solution

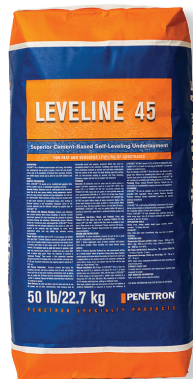


The **LEVELINE** Family

Self-leveling underlayments for a wide range of applications



LEVELINE® 15 A premium, calcium aluminate-based, interior, self-leveling underlayment that may be used as a wear surface in light duty applications (with appropriate sealers, such as PENESEAL FH). Its long working time, low shrinkage and superior leveling properties make it ideal for demanding interior applications.



LEVELINE 45 A calcium aluminate-based, self-curing, self-leveling floor underlayment used to create a level, flat and durable surface prior to installing a finished floor covering. Mixed with water only, it can be installed from feather edge up to 1½" (3.8 cm) neat and up to 5" (13 cm) extended with aggregate. LEVELINE 45 accepts tile and natural stone within 3-4 hours after application. Finished floor coverings (carpet, VCT, vinyl sheet goods, rubber, epoxy, and engineered wood plank) can be installed within 24 hours.



LEVELINE FLAT AND SMOOTH A calcium aluminate-based, self-curing, self-leveling floor underlayment used to create a level, flat and durable surface prior to installing a finished floor covering. Mixed with water only, it can be applied from featheredge to ½" (1.3 cm) neat. LEVELINE FLAT AND SMOOTH accepts tile and natural stone within 3-4 hours after application. Finished floor coverings (carpet, VCT, vinyl sheet goods, rubber, epoxy, and engineered wood plank) can be installed within 24 hours.



LEVELINE LITE A lightweight, fast setting, calcium aluminate-based, interior, self-leveling underlayment for use in areas where normal weight levelers or concrete would exceed allowable dead loads. It can be used as the final substrate for finished flooring and can be installed from ¼" to 2" (0.6-5.1 cm) in a single lift or up to 6" (15 cm) in multiple lifts. Finished flooring can be installed in just one day.



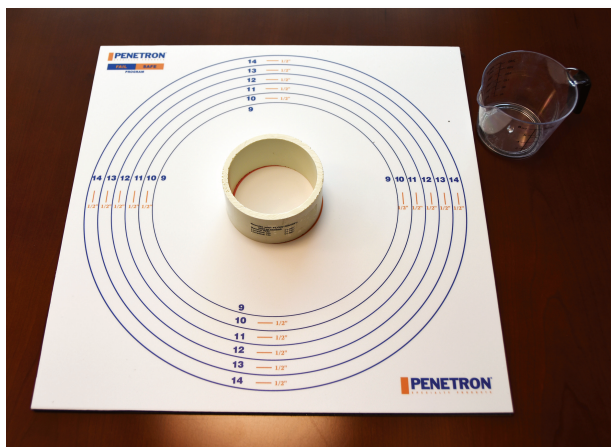
RENEW® WS A single component, smooth-flowing, economic, pumpable, self-leveling, fast-setting overlayment is used as a restorative wearing surface for concrete. The cured surface can be polished to a high, long-lasting sheen.

Fail-Safe: Ensuring a Successful Installation



The Fail-Safe Kit features:

- Easy-to-follow material testing procedures
- Flow test cylinder to measure the leveling material
- Measurement board to check the material's viscosity



Commitment to your project

PSP provides comprehensive technical support to help keep your project on schedule. From the initial tender to construction (with on-time delivery) and after-sales service, we are there when you need us.

The “Fail-Safe” quality assurance process helps contractors, floor installers and owners correctly install PSP’s self-leveling underlayment and epoxy mitigation product.

Catch mistakes before any damage is done!

The Fail-Safe kit and systematic installation process for floor coverings in commercial and residential construction projects provides a reassuring quality control instrument. Used for both self-leveling underlayments and epoxy mitigation applications, Fail-Safe helps to accurately measure the correct floor coverage rates. This ensures every installation meets the required project specifications.



Measuring the Fail-Safe board to check material viscosity.

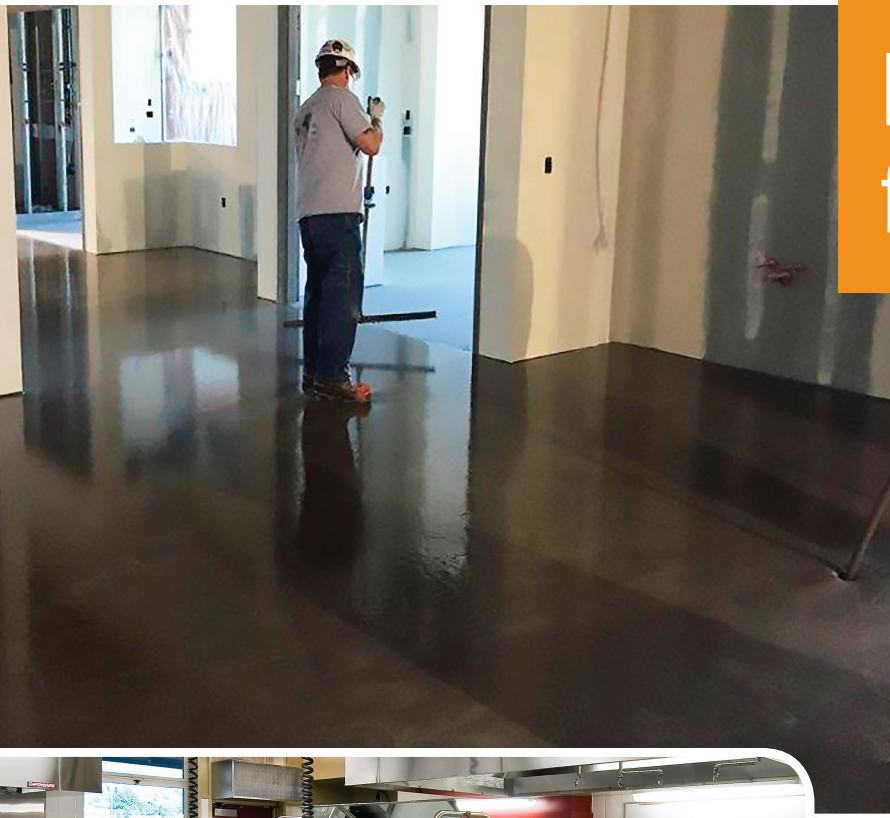
Children’s Hospital Boston, Boston, Massachusetts →

The Children’s Hospital Boston recently added a 10-story building addition at 57 Binney Street, with over 80,000 square feet (7,432 m²) of flooring treated with VB 225, PRIMER STX 100 and LEVELINE 15 and covered with Nora rubber flooring.



PSP Solutions for Underlayments

PENETRON Specialty Products develops and manufactures high quality floor preparation solutions for a wide range of applications. These products are designed to be installed as a complete system.



↑ **University of Chicago Medical Center, Chicago, Illinois**

The contractor for this \$269 million expansion project urgently needed material to complete the flooring installation. To stay on schedule, PSP supplied over 300,000 pounds of LEVELINE 15 underlayment to the job site; the installer began pouring 48 hours later.

← **Radisson Hotel, Nashua, New Hampshire**

The kitchen of this 336-room hotel underwent a complete renovation with 1,800 square feet (167 m²) of flooring treated with PRIMER STX 100 and LEVELINE 15, then covered with ceramic tiles.



← **Theory Wrentham Outlet Store, Wrentham, Massachusetts**

This retail outlet of the high-end Theory Store retail clothing store chain treated 2,800 square feet (260 m²) of flooring with PRIMER STX 100 and LEVELINE 15. A sealer was applied to the LEVELINE 15 surface, leaving the desired concrete floor finish which was a key design element to the layout.

Flooring Prep Solutions from PSP

In addition to the **LEVELINE** self-leveling underlayments, the **PSP** subfloor preparation system includes but is not limited to the following products:



VB 225™

A one-coat moisture vapor reduction system consisting of a unique combination of epoxy resins and other chemical compounds.



VB 225 FS

This fast-setting version of our one-coat moisture vapor reduction system features the same performance and durability.



SURFIX™ FEP

A cement-based, rapid-setting, trowelable underlayment used to smooth subfloors prior to installing a finished floor covering. Provides a durable bond.



SURFIX SCREED SET

A polymer-modified, rapid-setting, interior and exterior screed mortar ready to install with only water. Ideal for ramping transitions or creating screed sloped surfaces. Its creamy consistency allows for easy placement and finishing.



SURFIX SKM

A polymer-modified, rapid-setting, interior patching compound used to fill voids and smooth the surfaces of open concrete and wood underlayments prior to installation of finished floor coverings.



PRIMER STX 100™

A premium concentrated acrylic primer for use over various interior substrates from concrete to epoxy, wood and metal. Its unique ability to bond to both porous and non-porous substrates makes it ideal for varying jobsite conditions.

We make what we sell

PSP's manufacturing facility is a state-of-the-art blending and packaging plant. We maintain comprehensive manufacturing and tracking controls; samples from each production batch are saved to ensure consistent quality control and rapid response in case any questions arise. Our exacting quality control processes have earned us ISO 9001 and ISO 14001 environmental standards certifications.



FOR THE VERY BEST IN FLOOR PREP

IMAGE © PAYETTE

PENETRON Specialty Products

PENETRON Specialty Products offers reliable and high-quality products and solutions for the installation of floor coverings in commercial, residential and institutional construction. Our surface preparation products ensure optimal installation of virtually any floor covering. The company is a recognized innovator in surface preparation and concrete restoration products.

Constant Improvement:

PSP formulations are continuously optimized and manufactured at our facility. Exacting quality control processes have earned us ISO 9001 and ISO 14001 environmental standards certification.

A Global Network. PSP is part of the PENETRON Group, a recognized global leader in concrete protection systems. The PENETRON Group has locations in all key markets and facilities in Asia, Europe, North and South America, and offers products and technical support around the world through a comprehensive network of distributors.

PENETRON Specialty Products

www.penetransp.com

EMAIL: info@penetransp.com

PHONE: +1 631 941 9700

FAX: +1 631 941 9777